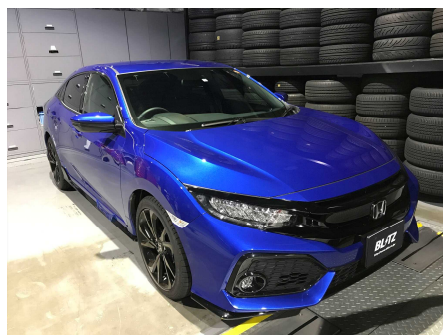


## Additional Application

# Thro Con

THROTTLE CONTROLLER



Installation to the CIVIC Hatchback



Installation to the SWIFT Sport

### 【Features】

- Evolved from the previous Throttle Controller, finer levels of control is possible.
  - Visibility is improved compared to previous models due to the VA system that shows higher levels of contrast on the Liquid Crystal Display.
  - A standard model, and a hybrid model for hybrid vehicles are lined up.
  - The accelerator position sensor is designed to operate just by connecting on. Easy installation with only a +12V electrical wiring.
  - There are a total of 20 modes to choose from such as 5 『ECO』 mode for fuel efficiency, 10 『Sport』 mode for smooth acceleration, 5 『AUTO』 mode where the Control MAP of the level and length of the opening of the throttle is automatically selected.
  - A “Simple Mode Function” allows the driver to easily choose from the 20 modes the top 5 most frequently used modes.
  - Other than a Bar Graph display, a Digital Numeral Display can show the output side of the throttle opening.
  - A warning function is equipped to indicate the driver to go easy on the throttle for fuel efficient driving. The indicator can be set at 10% increments between throttle openings between 30%~90%.
  - With the 『Reverse Cancel Harness』 (Sold separately) the throttle will automatically return to normal when put into reverse.
  - Other than the standard 20 modes, with the 『Scramble Switch』 (Sold separately), 3 additional scramble mode can be accessed. The scramble length can be selected from 30 seconds, 180 seconds, and Constantly.
  - The 『Start Control System』 (SCS) can control idling stop and sports mode functions during ignition. Idling stop function can be canceled and sports mode can be automatically selected during ignition to remove any troublesome operations.
- (Optional Connection Harness is necessary)

# BLITZ INFORMATION

Product Information			
Code No.	JAN Code	MSRP	Remarks
BTSG2	4959094155416	¥40,000	
BTSG3	4959094155423	¥40,000	
BTSP2	4959094155461	¥40,000	

## Vehicle Information

Vehicle	Model Year	Model	E/G Model	Remarks	Code No.
LEXUS					
GS300	2017/08-	ARL10	8AR-FTS		BTSG2
NX300	2017/09-	AGZ10, AGZ15	8AR-FTS		BTSG2
HONDA					
CIVIC HATCHBACK	2017/09-	FK7	L15C		BTSP2
SUZUKI					
SWIFT SPORTS	2017/09-	ZC33S	K14C		BTSG3

This product does not change the maximum output of the vehicle.

The feeling of improvements in acceleration and response will differ between people.

This product can only be use on vehicles with genuine electronic throttle control.

For further information on compatibility, please view the BLITZ POWER SITE listed below or contact the support center.