

Additional Applications

NUR-SPEC CUSTOM EDITION

- The NUR-SPEC exhaust system shines elegantly due to the mirror surface finish and made from all stainless SUS304 to ensure high durability.
- You will be able to choose between 3 different tail colors, and have control over the offset level of the tail.
- The exhaust system is certified and tested to pass the Japanese vehicle inspection.



Information on Compatible Vehicle

(Vehicle)	(Model Year)	(Ex-Gas Code)	(Model)	(E/G Model)	(Development Vehicle)	(Remarks)
SUZUKI						
SWIFT SPORT	2020/05~	4BA	ZC33S	K14C	SWIFT SPORT	MT Only. Complies with new regulation.

• Additional application for vehicles with 4BA emission code.

Product Information

(Product Name)	(Price)	(Code No.)	(JAN Code)	(Pre-Certification Number)	(Material)	(Tip Material)
NUR-SPEC CUSTOM EDITION CR	¥148,000	63180C	4959094657804	JQR40194119 K14Ct	SUS304	Carbon Red
NUR-SPEC CUSTOM EDITION VSR	¥108,000	63180V	4959094651802	JQR40194119 K14Ct	SUS304	Titanium Color
NUR-SPEC CUSTOM EDITION VS	¥98,000	63180	4959094631804	JQR40194119 K14Ct	SUS304	Stainless

BLITZ INFORMATION



NUR-SPEC CE VS / SWIFT SPORT

■ Specification

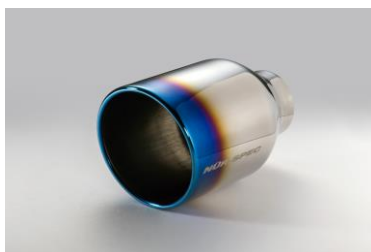
(Tip O.D.)	(Tip Piece)	(Pipe Size)	(Piece)	(Volume) Stock/ BLITZ	(Road Clearance)※1 /Location	(Weight) Stock/BLITZ	(Silencer structure)
φ101.6-2.5R	2	φ50-φ50×2	4	77dB / 87dB	145mm / Silencer	15.0kg / 14.5kg	Straight

※1: Measurement taken at location of shortest road clearance

Data has been acquired when the vehicle rested at stock height. Measurement will vary between vehicles.



NUR-SPEC CE CR Tail



NUR-SPEC CE VSR Tail



NUR-SPEC CE VS Tail

■ Optional Parts

(Product Name)	(Price)	(Code No.)	(JAN Code)	(Tail Diameter)	(Insertion diameter)	(Tip Material)
NUR-SPEC CUSTOM EDITIONφ101.6 CR Tail (1 Tail)	¥35,000	62203	4959094622031	φ101.6	φ52	Carbon Red
NUR-SPEC CUSTOM EDITIONφ101.6 VSR Tail (1 Tail)	¥15,000	62204	4959094622048	φ101.6	φ52	Titanium Color
NUR-SPEC CUSTOM EDITIONφ101.6 VS Tail (1 Tail)	¥10,000	62205	4959094622055	φ101.6	φ52	Stainless