

Additional Application for the Power Con  
has been confirmed for the LX600, STEP WGN



[Click here for more information on Power Con](#)



LX600 Installation Example

Product Characteristics

- By optimizing the boost pressure for turbo vehicles, more power can be obtained.
- Settings are taken vehicle specifically.
- Boost is increased within the level of the stock ECU to minimize the burden on the vehicle.
- Does not require any additional wiring modifications due to the plug and play design.
- The product can be easily installed since all connections are made within the engine room.
- Does not require any complicated setting procedures and power is immediately increased after installation.
- Includes all necessary parts for installation.

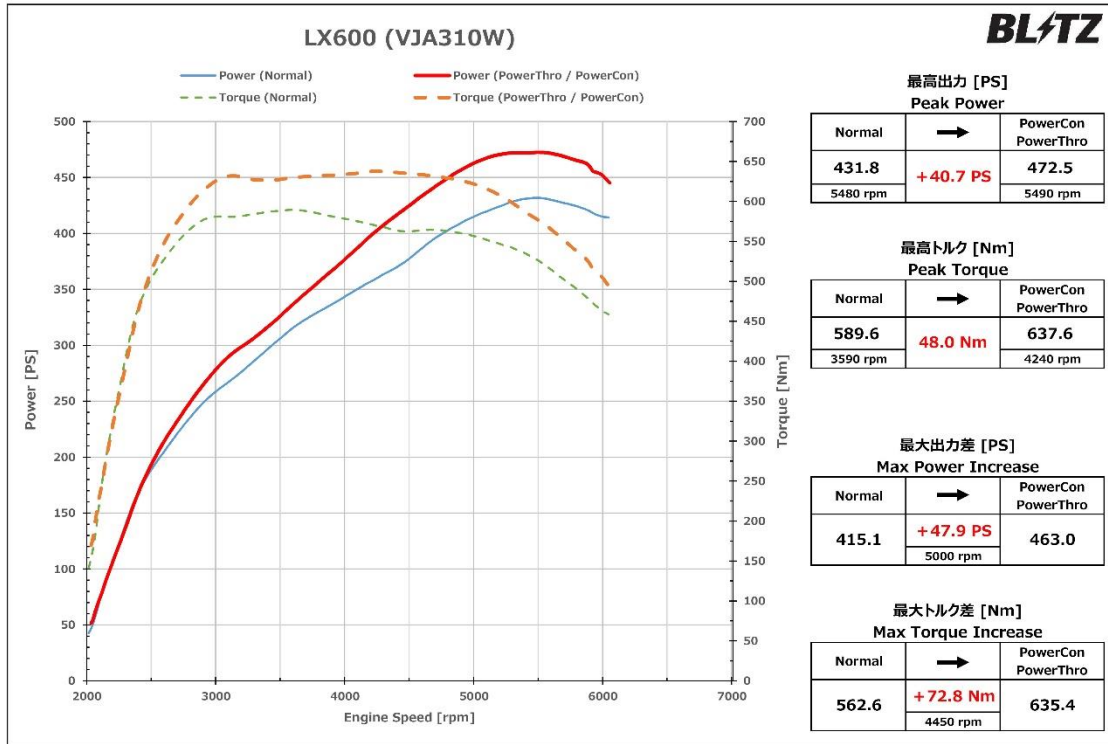
Information on Compatible Vehicles										
(Vehicle)	(Model Year)	(Model)	(E/G Model)	T/M	(Stock)	(Peak Power)	(MSRP w/tax)	(MSRP)	(Code No.)	(JAN Code)
LEXUS										
LX600	2022/01-	VJA310W	V35A-FTS	AT	431.8PS	472.5PS (+40.7PS)	¥63,800	¥58,000	BPC35	4959094157359
HONDA										
STEP WGN	2022/05-	RP6, RP7	L15C	CVT	138.5PS	158.7PS (+20.2PS)	¥41,800	¥38,000	BPC04	4959094157045

- ※ Depending on the individual, the sensation for the improved acceleration, response, and power may differ.
- ※ The POWER UP values listed on the product information shows the difference in output between vehicles equipped with Power Con and stock. All measurements taken by in house chassis dynamo.
- ※ Output may differ depending on the vehicle. Please keep in mind that these values are only for reference.
- ※ The product can be equipped along with the BLITZ AIR FILTER Series and AIR CLEANER Series.  
Has not been tested with air filter, air cleaners from other manufacturers.
- ※ Cannot be equipped on vehicles with rewritten ECU (Including BLITZ TUNING ECU), replaced ECU, or vehicles equipped with electronic parts attached to the boost sensor or air flow sensor.

Optional Parts				
Product Name	Code No.	MSRP w/tax	MSRP	Remarks
Thro Con-Power Con Connection Harness	14797	¥3,300	¥3,000	Install this harness to link the Thro Con and Power Con together.

■ Power Graph

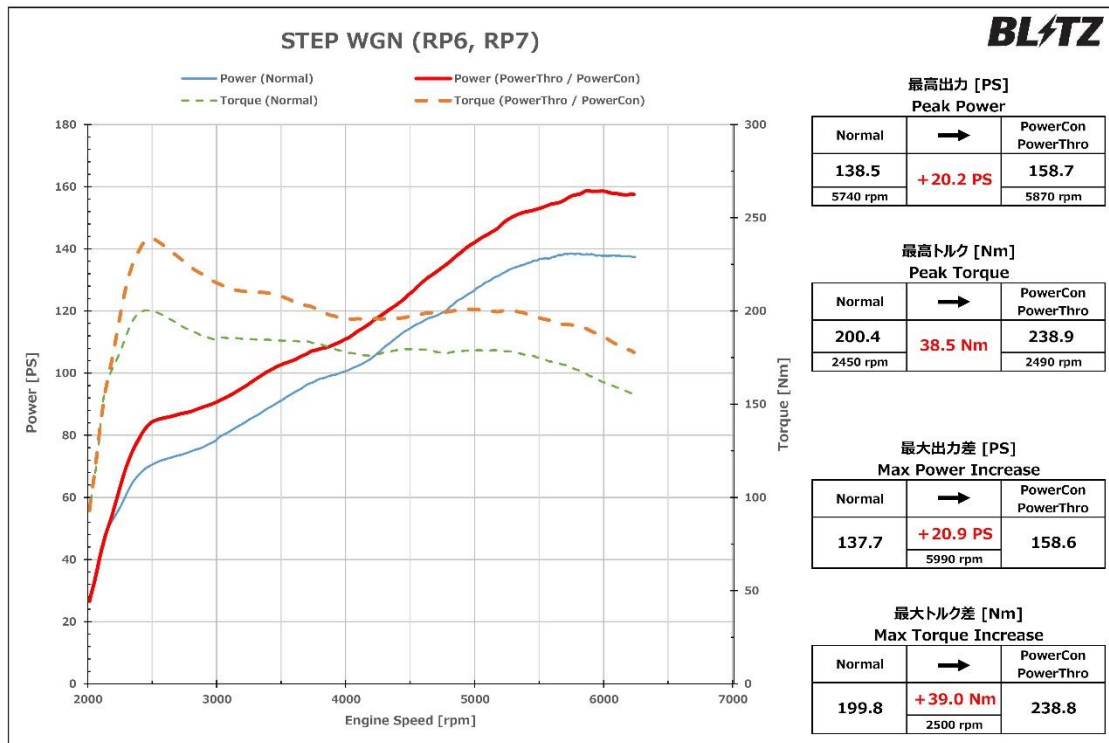
○ LX600 : Increase in Maximum Output 40.7PS. Increase in Maximum Torque 48.0Nm.



※グラフ、データは弊社シャーシダイナモでの計測事例です。車両ならびに装着部品、燃料などにより個体差があります。

■ Power Graph

○ STEP WGN : Increase in Maximum Output 20.2PS. Increase in Maximum Torque 38.5Nm.



※グラフ、データは弊社シャーシダイナモでの計測事例です。車両ならびに装着部品、燃料などにより個体差があります。

[Click here for more data on Power Con](#)